

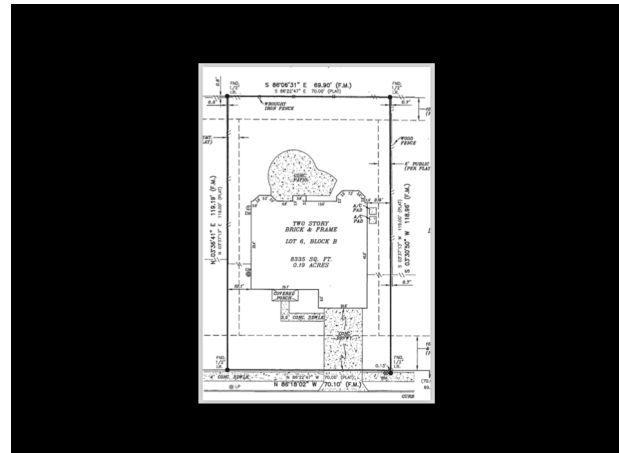
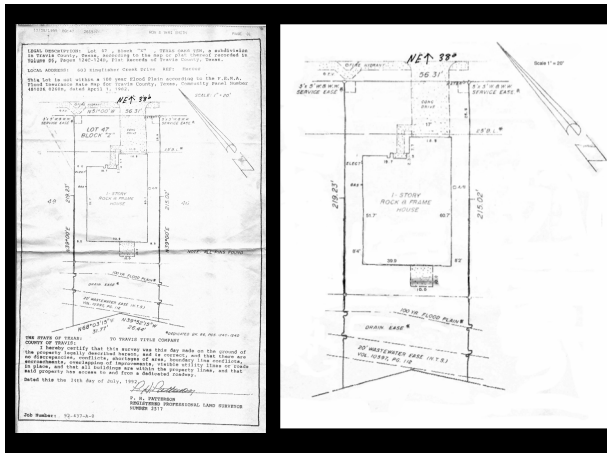
## Design Process for Small Outdoor Spaces



## Make a Base Map

- Large paper – 17" x 22" or 22" x 36"
- Scale –  $\frac{1}{4}" = 1'$  or  $\frac{1}{8}" = 1'$
- Include
 

Name	Lines showing right of way
Date	Easements
Scale	Permanent Structures
NSEW Arrows	Neighbors
Boundary Lines	Highest and lowest altitude
Lines showing setbacks	



## Observation

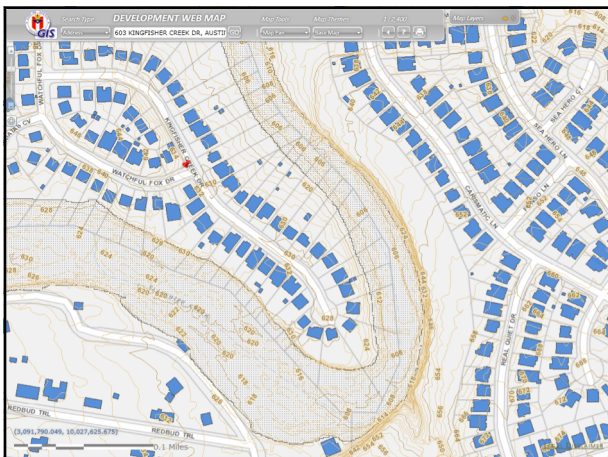
- Walk the site
  - Take photos
  - Noise
  - Note wind directions
  - Soil collapse
  - Surface water flows
  - Sun/Shade patterns
  - Views



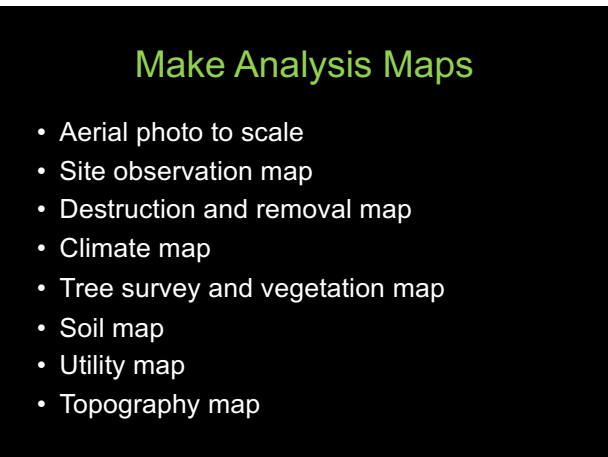
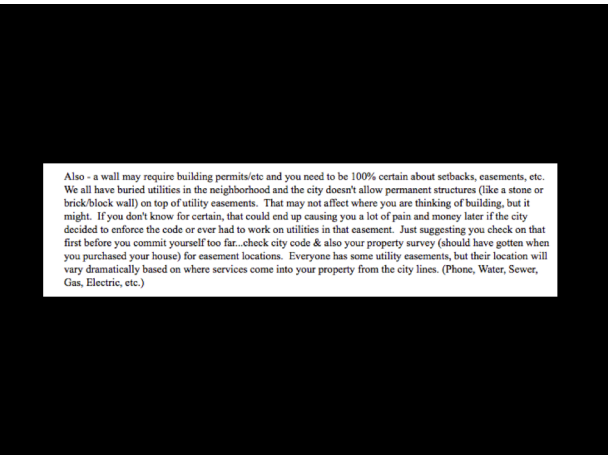


## Research Your Site

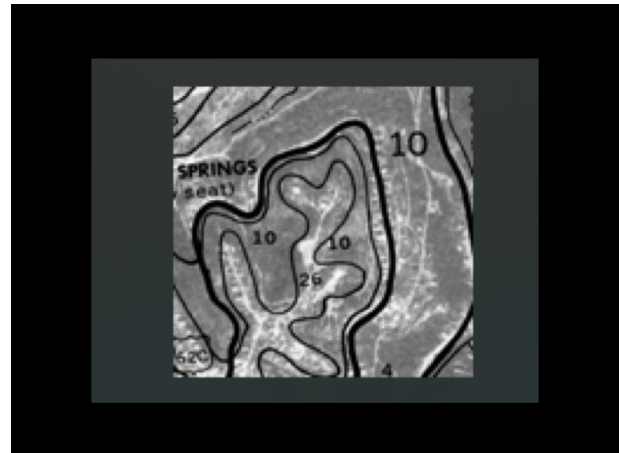
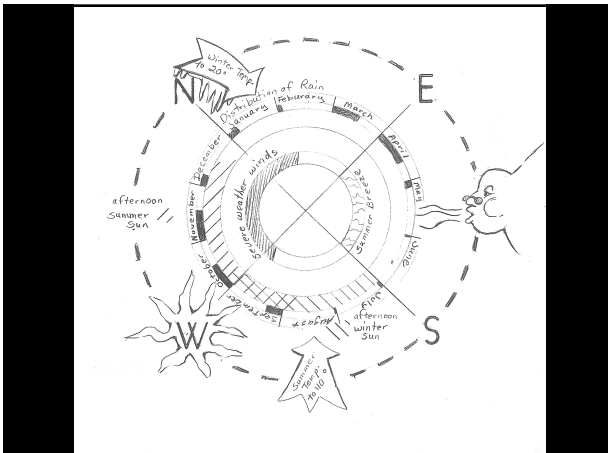
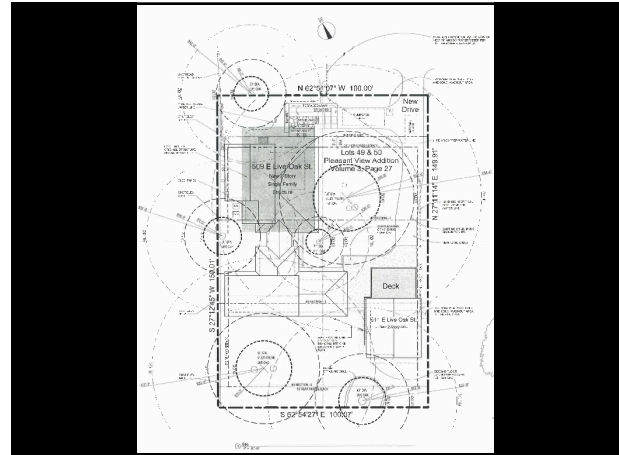
- Legal
  - What are you aloud to do
- Possible Catastrophes
  - Fire
  - Flood
  - Wind
  - Dig protection and soil collapse
  - Traffic crash







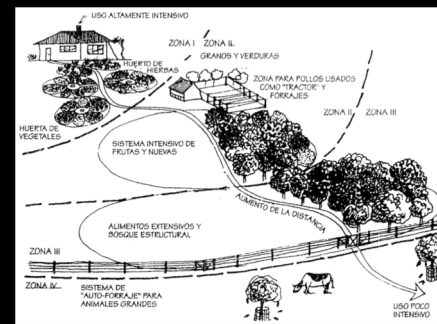
- Aerial photo to scale
- Site observation map
- Destruction and removal map
- Climate map
- Tree survey and vegetation map
- Soil map
- Utility map
- Topography map



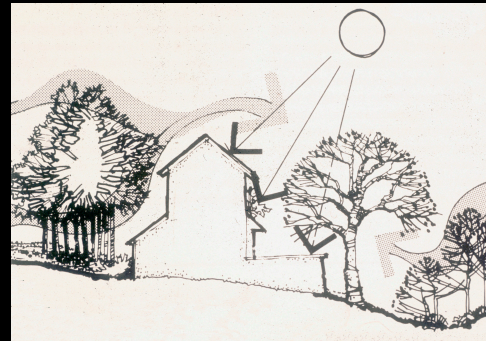
## Wants and Needs

- **Needs** are things you must have or the design simply won't work for you.
- **Wants** are things you would like to have, but if necessary you could do without.

## Zones

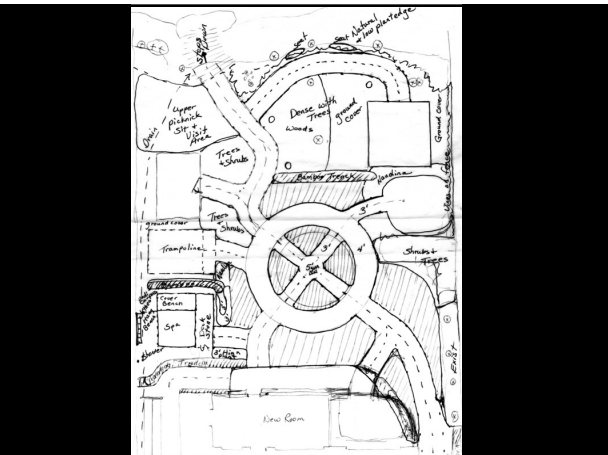
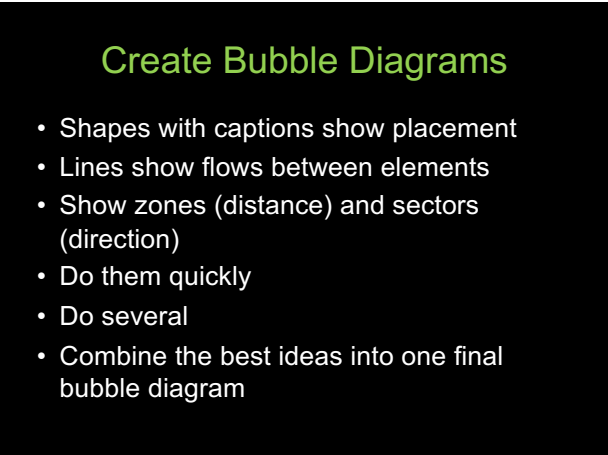






## A diagram illustrating the vertical structure of a forest. It shows a cross-section with various types of trees and shrubs. Labels on the left side point to different layers: 'Canopy layer' points to the top of the tallest trees; 'Tree layer' points to the middle section of the trees; 'Sub-tree layer' points to the lower section of the trees; and 'Shrub layer' points to the ground-level vegetation. The diagram uses different shades of green to represent different plant types and heights.

[illegible]



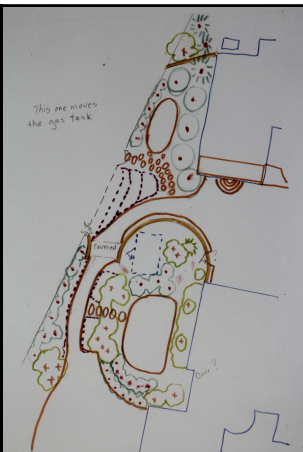
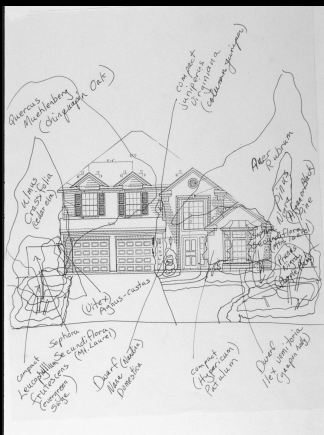


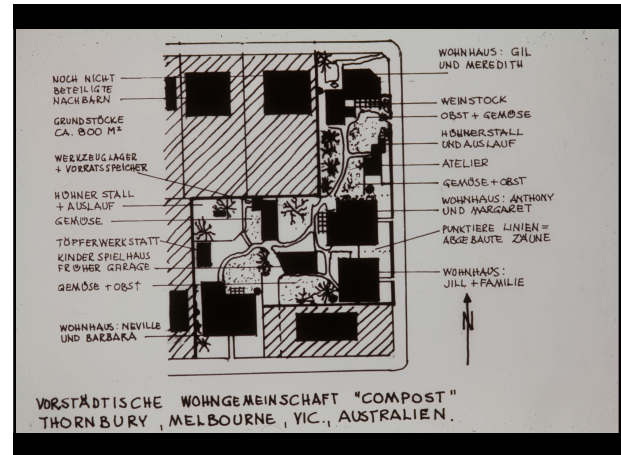
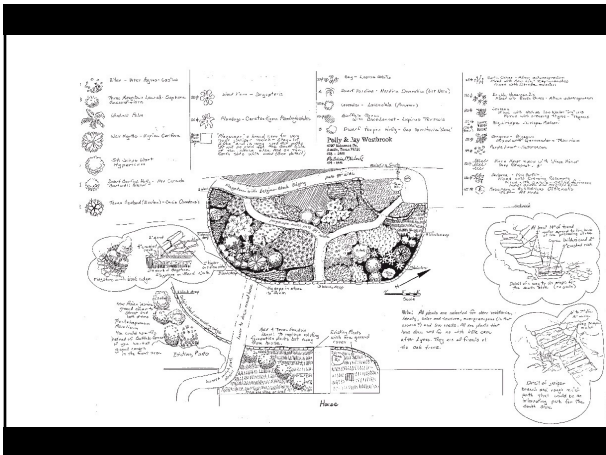
## Make a Program

- List elements to include
- List design goals

## Create Your Final Design

- Draw your design over a copy of the base map
- Take time, make it look good
- Use overlays for utility details
- You can make separate drawings for hard surfaces and plants
- List elements separately





Patricia Michael Design  
(512) 291-4300  
[www.PatriciaMichaelDesign.com](http://www.PatriciaMichaelDesign.com)



